



ENNERDALE HOUSE, MILE END, E3

£1,700 OFFERS IN EXCESS

- Secure Entry Sytem
- Walk-In Wardrobe
- Superb Location
- Eat-In Kitchen
- Separate Lounge

wj.
meade



Ennerdale House

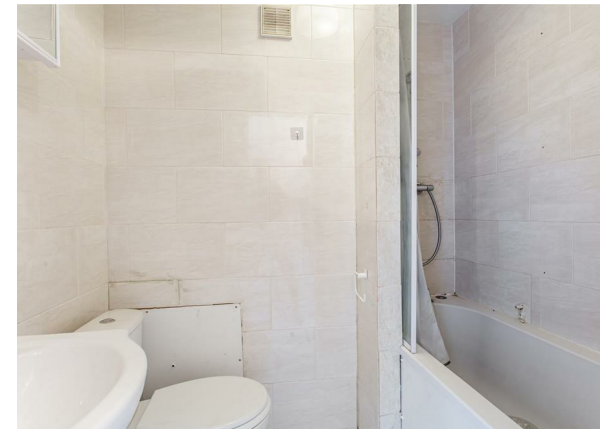
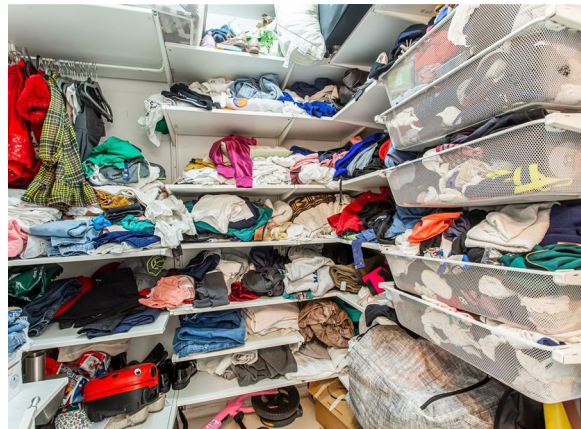


13th Floor
Approximate Floor Area
542 sq. ft
(50.37 sq. m)

Approx. Gross Internal Floor Area 542 sq. ft / 50.37 sq. m

Illustration for identification purposes only. Measurements are approximate, not to scale.

Produced by Elements Property



W J Meade are pleased to offer this one bedroom flat just moments from Mile End Station and opposite the Tower Hamlets Cemetery Park Nature Reserve. Featuring a large double bedroom, spacious lounge, eat-in kitchen and family bathroom. The views across the city are breath taking! Available beginning of July. Deposit is 5 week's rent.

All sizes are approximate. The Agent has not tested any apparatus, equipment, fixtures and fittings, or services and so cannot verify that they are in working order or fit for the purpose. A buyer is advised to obtain verification from their Solicitors or Surveyor. Photographs are for illustration purposes only and may depict items, which are not for sale or included in the sale price. References to tenure of a property are based upon information supplied by the vendor. The agent has not had sight of the title documents, a buyer is advised to obtain verification from their solicitor. Money Laundering Regulations 2003: Intending purchasers will be asked to produce identification, documentation at a later stage and we would ask for your co-operation in order that there will be no delay in agreeing the sale.

These particulars are intended to give a fair description of the property only and are in no way guaranteed, nor do of any contract. They are issued on the express condition that all negotiations are conducted through W.J. Meade Estate Agents. All subject to contract and to being unsold.

Service charge £n/a
Ground rent £n/a
Reserve fund £n/a
n/a years lease
Council tax band B
Current EPC Rating 73
Tenure:

